



Ansley Common, Nuneaton, CV10 0PY  
Tel: 02476 392318

Dear Parents/Carers

Another fun filled week at Nursery Hill Primary School, seeing the children enjoying their learning and embracing fun activities. Our before and after school activities has become increasingly popular with children enjoying further activities outside of the school day. Please see the school website or contact the office for further details.

### **Winter Decorations Club**

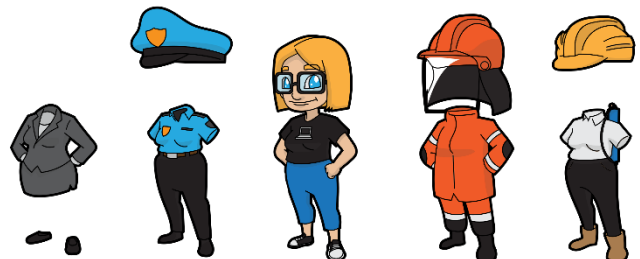
Today your child/ren will be bringing home a letter about the Winter Decorations Club. If your child wishes to attend please complete the slip and return it to school by Monday 29<sup>th</sup> November.

### **Unite The Uniform Day**

Friday 3<sup>rd</sup> December is Unite The Uniform Day, please send your child dressed in emergency services colours to show our appreciation for all the hard work that they do to keep us safe.

This is part of a campaign called [#UniteTheUniforms for the @999Cenotaph](#).

The campaign encourages children to wear the colours of the emergency services (red, blue, green or orange) and donating £1 towards building the UK's first 'Emergency Services Cenotaph' which is supported by His Royal Highness The Duke of Cambridge, the Prime Minister and First Ministers of NI, Scotland and Wales. Please see [www.999Cenotaph.org.uk/UTU](http://www.999Cenotaph.org.uk/UTU) for more information



### **Wash Hands**



Please remind your children to wash their hands regularly, this can help prevent the spread of germs that can cause illnesses including Covid-19.

There has been a lot of children with upset stomach's over the past week. Please remember if your child has sickness and/or diarrhoea they must remain home for 48 hours after their last episode. Always call the school office to report an absence.

### **Parent/Carer Evening**

Please look out for a letter early next week. Next week is Assessment week, where we will be measuring the progress the children have made in maths, reading and writing. We would like to take the opportunity to report back to parents. We will be doing this via Microsoft Teams or telephone conversation. More information to follow.

### Winter Party

There will be a Winter party from 3.30pm until 4.30pm to celebrate the end of the year on the following dates:

Tuesday 14<sup>th</sup> December keystage 1

Thursday 16<sup>th</sup> December keystage 2

The children will be able to enjoy party food and a disco and have lots of fun. More details to follow.



### Christmas Dinner

Wednesday 15<sup>th</sup> December there will be a festive lunch:

Roast Turkey Breast Fillet,

Sausage & Bacon Roll

Sage & Onion Stuffing

Gravy

Or

(vg) Roast Quorn Fillet

Sage & Onion

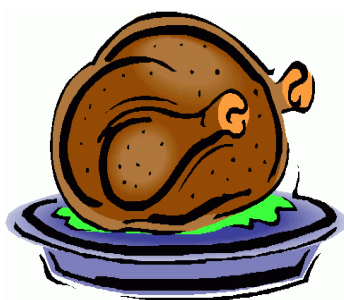
Gravy

Served with Crispy Roast Potatoes

Garden Peas and Baby Carrots

(v) Ice Cream or

(vg) Homemade Chocolate Cracknel Bauble



Letters regarding ordering Christmas lunch have been sent home today, please return these on Wednesday 1<sup>st</sup> December.

### Reception Reminder

Applications open for Reception School Places - Children born between 1 September 2017 and 31 August 2018.

Please note that the deadline for applying for Reception school places comes round very soon after Christmas (15 January 2022), please see the school website for further information.

All applications received by the deadline of 15 January 2022 will receive a school offer on 19 April next year, which is National Offer Day. Any applications submitted after the 15 January deadline will only be considered after 19 April, meaning the child is much less likely to be offered a place at a preferred school.

Applications should be made online at: <https://www.warwickshire.gov.uk/school-admissions-appeals>.

### Viking Day

Our year 5/6 have been learning about the Vikings and today had a special visit from a Viking. They talked about the life of a Viking and saw artefacts from the period. They had fun in their learning, enjoying the opportunity to ask questions, listen to music and see costumes.



### Inclement Weather

Please make sure that the children are dressed appropriately for the changing weather.

Children should have the following clearly labelled:

- A coat with hood
- Hat, scarf, gloves
- Appropriate school shoes, not trainers (unless PE day)



Thank you.

### Attendance

Week commencing 22<sup>nd</sup> November

<u>Class</u>	<u>Percentage</u>
EYFS	71%
Year 1	72.1%
Year 2	88.2%
Year 3/4	77%
Year 5/6	76.9%

Our school target is 96%. Come on we can do it!

### Communication



If you wish to speak to the class teacher please phone the school office (**02476 392 318**) and leave a message for your child's class teacher. They will get back to you at the end of the day.

It is important that we have an up to date email address and mobile number, just in case we need to contact you during unforeseen circumstances.



To log onto our Facebook account, please log onto Facebook and type in Nursery Hill Primary School. It will take you straight to our Facebook page.



Why not follow us on Twitter? Our account is as follows: **@nursery\_hill & @NurseryHillEYFS**

## Nursery Places

The school nursery has become unsurprisingly popular, the children have lots of fun whilst learning, giving them that head start before starting school. We do have a few vacancies left in Nursery.



There are other opportunities to join the Nursery Hill family throughout the year, these are:

CHILDREN BORN - 1<sup>ST</sup> JANUARY – 31<sup>ST</sup> MARCH - [SUMMER TERM \(FROM 1<sup>ST</sup> APRIL\)](#)

CHILDREN BORN - 1<sup>ST</sup> APRIL – 31<sup>ST</sup> AUGUST - [AUTUMN TERM \(FROM 1<sup>ST</sup> SEPTEMBER\)](#)

CHILDREN BORN - 1<sup>ST</sup> SEPTEMBER – 31<sup>ST</sup> DECEMBER - [SPRING TERM \(FROM 1<sup>ST</sup> JANUARY\)](#)

Prices are as follows:

**15 HOURS FUNDING** - All children aged 3+ are entitled to 15 hours free Nursery provision the term after their birthday.

**30 HOURS FUNDING** - Some families may be entitled to 30 hours free Nursery provision, please check on the following website: [www.gov.uk/apply-30-hours-free-childcare](http://www.gov.uk/apply-30-hours-free-childcare)

**FLEXIBLE** - Working with families to provide both morning and/or afternoon placements on days to suit

**RATE** - For families that require additional hours but are not eligible for free 30 hours, we can offer additional hours at just £4.15 per hour.

Stay safe. Be kind.

Yours sincerely

Ms J Clarke

Head of School